

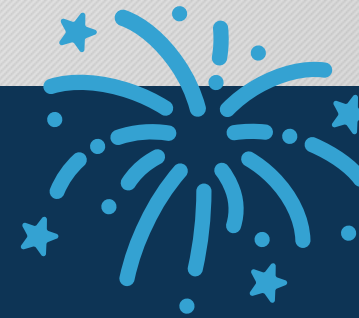
Training 12

Change Announcement 9/6/23



**Employment
Security
Department**
WASHINGTON STATE

A Momentous Occasion!



CONGRATULATIONS, MARY!

Our precious **Mary MacLennan** is retiring from state service after **44** years with ESD!

Please join me in congratulating Mary on her achievement, and in thanking her for the *amazing* work she's done to support & serve the T12 community!



T12 Meeting Facilitation



We'll pause T12 until October 4th - moving forward, the T12 meeting invite and email distribution list will be maintained by Donetta McCormack.

- Our existing meeting series expires today, 9/6. You'll receive a new meeting invite from WSS Business Analyst, **Donetta McCormack**, whom many of you know as an integrated part of our team and a strong supporter of the WorkSource technology portfolio!
- We'll keep our current meeting cadence* and virtual meeting platform the same - *T12 meets every-other-Wednesday at 10:00am PT, hosted with WebEx.*
- ***We will be pausing T12 for the balance of September – resuming October 4th**

T12 Resources



- T12 meets every-other-Wednesday at 10:00am PT
 - Follows an agenda, including time for open discussion
 - Minutes and a link to the meeting recording are posted on the Workforce Professionals Center (WPC) T12 page - <https://wpc.wa.gov/tech/T12>
- Please email esdgpwssteam@esd.wa.gov if you would like to be added to, or removed from, the recurring meeting invite and/or distribution list.
- ETO and WSWA training materials are also accessible via the WPC's Technology tab - <https://wpc.wa.gov/tech>

T12 Focus Remains the Same



T12 is an informational meeting forum, open to all staff using the Workforce Integrated Technology (WIT) systems, where we share status details and discuss technology changes or enhancements that affect system users.

The meeting focuses on:

- Communication of system configuration changes, improvements, planned maintenance, and reported Training or System issues
- Information-sharing across local WDAs by providing documentation, presentations, and demos that are made available to all system users
- Providing updates to local leadership on how changes to technology will impact them

The T12 facilitation team will communicate WIT change requests approved through WorkSource governance.

Although T12 may provide input, support, and advice, this team is *not* a decision-making body.

T12 Membership



The T12 team is comprised of program subject matter experts and central office staff who deliver training for

- Efforts To Outcomes (ETO) case management,
- RESEA's Reemployment Appointment Scheduler (RAS),
- and the WorkSourceWA.com (WSWA) job match system, to ensure accurate data collection and entry.

Membership Includes:

- ETO System Users
- Local Area Trainers
- Program Operators
- Program Support Specialists
- Policy
- Monitoring
- Data Integrity
- Grants Management